



Sample Predictive Maintenance Report

Thermographic Analysis

12857 E. Independence Blvd., Suite F
Matthews, North Carolina 28105
800-532-0415
www.ISIservesYOU.com



<u>Repair Priority</u>	<u>Description & Remarks</u>
4	Minor: Make repairs during regular maintenance schedule. There is little probability of immediate physical damage.
3	Intermediate: Make repairs in the near future (2-4 weeks). Watch load and change accordingly to minimize. Inspect for physical damage. There is probability of damage in the component, but not in the surrounding components.
2	Serious: Make repairs in the immediate future (1-2 days). Component replacement may be necessary. Inspect the surrounding components for heat-related damage.
1	Critical: This equipment should be taken out of service immediately, if possible. Replace damaged component(s) and inspect surrounding components.



Summary of Inspection at

ABC Company

List of Thermal Anomalies

Location #	Area	Equipment	Priority
1	Outside	ES-10	1 - CRITICAL
2	GE Room	Aux Hyd Filter Pump	1 - CRITICAL
3	RF3 MCC	#2 Filter Pump	2 - SERIOUS
4	Motor Room	RF5 MCC Fume Exhaust	2 - SERIOUS



Infrared Thermography Survey Results

Date

Location #

ABC Company

3/7/2007

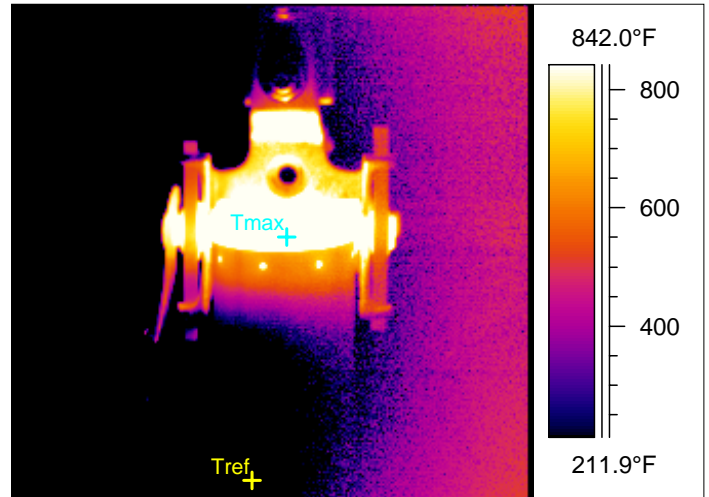
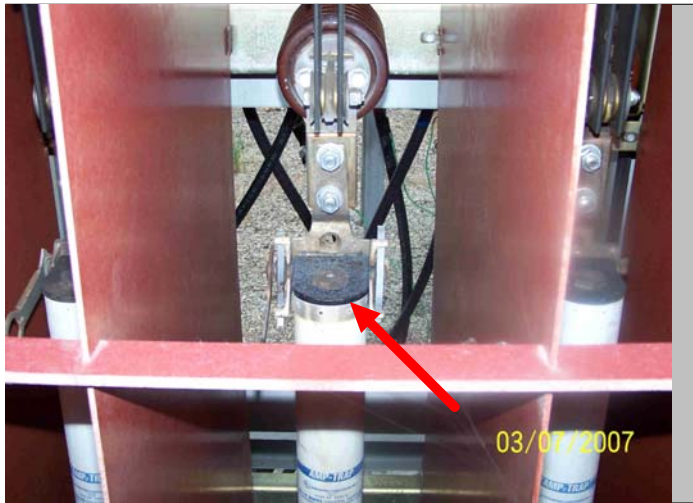
1

AREA EQUIPMENT	Outside ES-10
-----------------------	------------------

LOCATION PRIORITY	"B" phase line side fuse clip 1 - CRITICAL
--------------------------	--

Digital Image

Infrared Image



Data & Analysis

AMMETER	Not Available
ATMOSPHERIC TEMP.	60.8°F
REL. HUMIDITY (%)	0.70
CAMERA TYPE	ThermaCAM PM250
CAMERA SERIAL #	16286

HOT SPOT TEMP.	>842.0°F
REFERENCE TEMP.	<212.0°F
TEMP. DIFFERENCE	*630.00°F
BACKGROUND TEMP.	39.2°F
THERMOGRAPHER	Chad Furguson

PROBABLE CAUSE	Loose fuse clip hardware.
-----------------------	---------------------------

RECOMMENDATION	Recommend disassembling and cleaning all mating surfaces. Check for loose and distorted hardware and check fuses for corrosion. Replace as necessary. Inspect the surrounding components for signs of damage as well.
-----------------------	---

COMMENTS	
-----------------	--

REPAIRED BY/DATE: _____



Infrared Thermography Survey Results

Date

Location #

ABC Company

3/7/2007

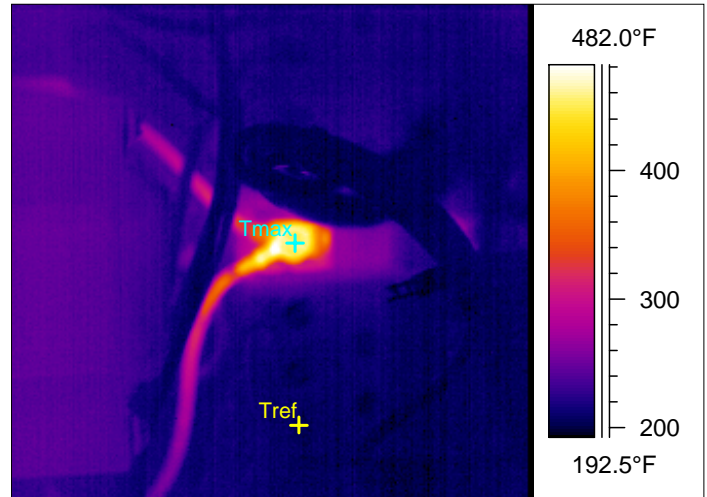
2

AREA EQUIPMENT	GE Room Aux Hyd Filter Pump
-----------------------	--------------------------------

LOCATION PRIORITY	4th screw up on right 1 - CRITICAL
--------------------------	--

Digital Image

Infrared Image



Data & Analysis

AMMETER	Not Available
ATMOSPHERIC TEMP.	60.8°F
REL. HUMIDITY (%)	0.70
CAMERA TYPE	ThermaCAM PM250
CAMERA SERIAL #	16286

HOT SPOT TEMP.	460.0°F
REFERENCE TEMP.	*202.7°F
TEMP. DIFFERENCE	*257.31°F
BACKGROUND TEMP.	69.8°F
THERMOGRAPHER	Chad Furguson

PROBABLE CAUSE	Loose or corroded terminal screw.
-----------------------	-----------------------------------

RECOMMENDATION	Check terminal screw for looseness and repair damaged wiring and terminal block. Check surrounding components for signs of heat related damage.
-----------------------	---

COMMENTS	
-----------------	--

REPAIRED BY/DATE: _____



Infrared Thermography Survey Results

Date

Location #

ABC Company

3/7/2007

3

**AREA
EQUIPMENT**

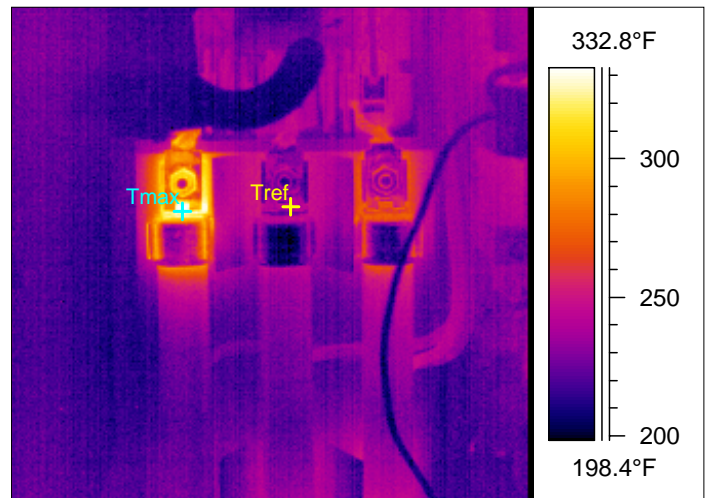
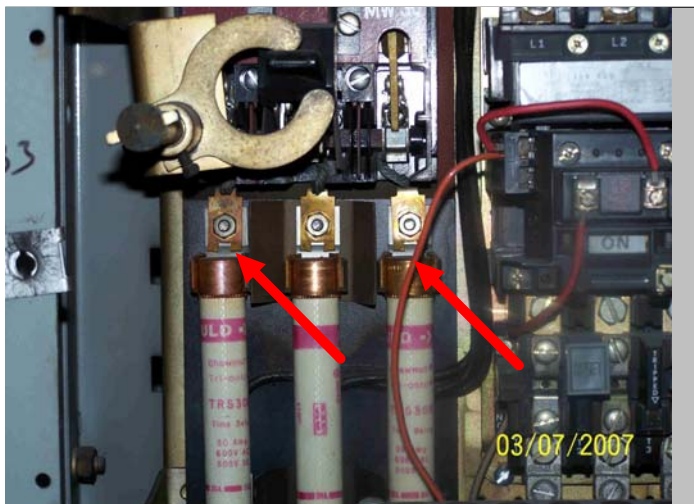
RF3 MCC
#2 Filter Pump

**LOCATION
PRIORITY**

"A" & "C" phase line side clips
2 - SERIOUS

Digital Image

Infrared Image



Data & Analysis

AMMETER	Not Available	HOT SPOT TEMP.	330.6°F
ATMOSPHERIC TEMP.	60.8°F	REFERENCE TEMP.	244.2°F
REL. HUMIDITY (%)	0.70	TEMP. DIFFERENCE	86.39°F
CAMERA TYPE	ThermaCAM PM250	BACKGROUND TEMP.	69.8°F
CAMERA SERIAL #	16286	THERMOGRAPHER	Chad Furguson

PROBABLE CAUSE	Loose or corroded hardware.
-----------------------	-----------------------------

RECOMMENDATION	Check for proper fuse clip tension and replace as necessary. Inspect surrounding hardware for signs of looseness or corrosion and clean and tighten.
-----------------------	--

COMMENTS	
-----------------	--

REPAIRED BY/DATE: _____



Infrared Thermography Survey Results

Date

Location #

ABC Company

3/7/2007

4

**AREA
EQUIPMENT**

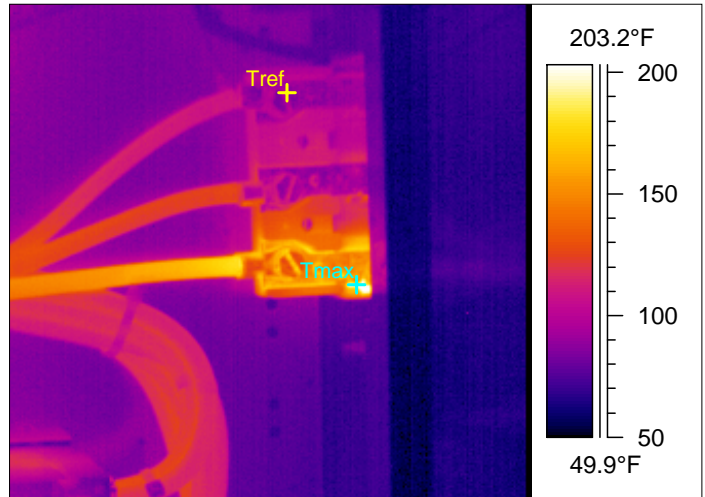
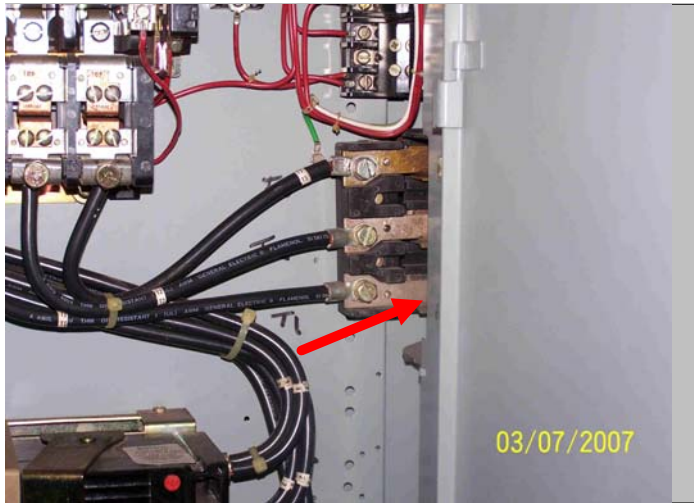
Motor Room
RF5 MCC Fume Exhaust

**LOCATION
PRIORITY**

T-1 terminal connection
2 - SERIOUS

Digital Image

Infrared Image



Data & Analysis

AMMETER	Not Available	HOT SPOT TEMP.	189.6°F
ATMOSPHERIC TEMP.	60.8°F	REFERENCE TEMP.	94.5°F
REL. HUMIDITY (%)	0.70	TEMP. DIFFERENCE	95.07°F
CAMERA TYPE	ThermaCAM PM250	BACKGROUND TEMP.	69.8°F
CAMERA SERIAL #	16286	THERMOGRAPHER	Chad Furguson

PROBABLE CAUSE Loose or corroded terminal connection.

RECOMMENDATION Recommend inspecting the terminal block and all connections coming and going to it. Inspect for damaged wiring and replace as necessary.

COMMENTS

REPAIRED BY/DATE: _____